



## Yachting World Dayboat Championships

August 6<sup>th</sup> – 11<sup>th</sup> 2016

### Brixham Yacht Club

The Organising Authority is Brixham Yacht Club

## SAILING INSTRUCTIONS

### 1. RULES

- 1.1 The championship will be governed by Racing Rules of Sailing 2013-2016 (RRS)
- 1.2 Racing Rule Changes, the following Racing Rules are changed,
  - rule 27.1 notification of course
  - rules 28, 32.2, 35 and Appendix A additional definition for a shortened course and sweep back finish system
  - rule 35 additional time limits for races,
  - rule 40 and preamble to part 4 – No display of flag Y
  - rule 62.1 limitations on grounds for redress
  - rule 66 Time limits for requesting redress on last day of regatta
  - appendix A2, number of discards in a series
  - rule 63.1, appendix A4 and A5, penalties and scores determined by the Race CommitteeFull details of the changes are given in the appropriate instructions below.

### 2. NOTICES TO COMPETITORS

- 2.1 Notices to competitors will be posted on the official notice board (ONB) at the Brixham Yacht Club which is located in the window of the Regatta Office which is an outside office on the harbour side of the club called the 'Holman Room', near the top of the steps from the main club house to the dinghy compound.

### 3. CHANGES TO SAILING INSTRUCTIONS

- 3.1 Any change to the Sailing Instructions will be posted before 08.30 hrs on the day it will take effect, except that any change to the Schedule of Races will be posted by 20.00 hrs. on the day before it will take effect. The changes will be numbered sequentially and indicated by flying flag "L" together with the appropriate numeral pennant. Changes to the SIs may be posted on the event website and [www.brixhamyachtclub.com](http://www.brixhamyachtclub.com) Contender Nationals page. Notices posted on the ONB shall prevail over web based notices. Failure to post changes to SIs on the websites shall not be grounds for redress under rule 62.1a.

### 4. SIGNALS MADE ASHORE

- 4.1 Signals made ashore will be flown from the Club mast beside the Clubhouse
- 4.2 When flag AP is displayed ashore, '1 minute' is replaced with 'not less than 60 minutes' in the race signal AP. This adds to the meaning of AP in RRS Race Signals.

### 5. SCHEDULE OF RACES (all times are in BST taken from GPS time)

- 5.1 Registration: Will be at Brixham Yacht Club between 16.00 and 18.00 on Saturday 6<sup>th</sup> August.
- 5.2 Competitor Briefing: There will be a briefing for competitors at 09:30 on Sunday 7<sup>th</sup> August 2016 in the main bar of Brixham Yacht Club.

- 5.3 Dates of Racing from Sunday 7th September to Thursday 11th September 2016 inclusive,  
The scheduled time of the warning signal for the races are as shown below;

<i>Date</i>	<i>Race</i>	<i>Warning Signal</i>	<i>Time of High Tide</i>
Sunday 7th August	Briefing followed by Race 1 and Opportunity Race	Briefing: 09.30 Points Race 1: 10.55 Opportunity Race: 13.55	1 <sup>st</sup> Low 03:19 1 <sup>st</sup> High 09:53 2 <sup>nd</sup> Low 15:32 2 <sup>nd</sup> High 22:05
Monday 8th August	Races 2 and 3	Points Race 2: 10.55 Points Race 3 asap after Race 2	1 <sup>st</sup> Low 03:53 1 <sup>st</sup> High 10:25 2 <sup>nd</sup> Low 16:06 2 <sup>nd</sup> High 22:37
Tuesday 9th August	Long Distance Race and Pursuit Race	Long Distance Race: 10:25 Pursuit Race TBC	1 <sup>st</sup> Low 04:28 1 <sup>st</sup> High 10:59 2 <sup>nd</sup> Low 16:42 2 <sup>nd</sup> High 23:12
Wednesday 10th August	Race 4 Trophy Race	Points Race 4:10.55 Asap after Race 4	1 <sup>st</sup> Low 05:05 1 <sup>st</sup> High 11:36 2 <sup>nd</sup> Low 17:22 2 <sup>nd</sup> High 23:50
Thursday 11th August	Race 5	Points Race 5:10.55	1 <sup>st</sup> Low 05:48 1 <sup>st</sup> High 12:18 2 <sup>nd</sup> Low 18:09 2 <sup>nd</sup> High 00:36

- 5.4 After a long postponement or for the second or any subsequent races to alert boats that a race or sequence of races will begin soon, the orange starting line flag will be displayed with a series of 5 horn sounds at least two minutes before a warning signal is made.
- 5.5 No warning signal will be made after 15.00 on Thursday 11<sup>th</sup> August.

## 6 CLASS FLAG

- 6.1 The Class flag will be flag D

## 7 RACE AREA

- 7.1 The racing area will be in Torbay, Admiralty Chart 26 and will usually be located within the area indicated in Appendix 1

## 8 THE COURSES

- 8.1 The diagram in the Appendix 2 shows the course for the Points Races, including the approximate angles between legs, the order in which the marks are to be passed and the side on which each mark is to be left.
- 8.2 No later than the warning signal, the Committee Boat (CB) shall display the course and number of laps to be sailed and may display the approximate compass bearing of the first leg.

## 9 MARKS

- 9.1 Marks 1 and 2 will be a 1.5m orange dumpy inflatable buoy, mark 3 will be 1m red spherical buoy.
- 9.2 The start marks for a line start will be:

- 9.2.1 The CB at the starboard end displaying an orange flag.
- 9.2.2 A dan buoy or a boat at the port end displaying an orange flag
- 9.3 The finishing marks will be:
  - 9.3.1 The CB displaying a blue flag
  - 9.3.2 A dan buoy displaying a blue flag
- 9.4 The change windward mark as provided in SI 13 will be a yellow 1.5m high dumpy mark.

## **10 AREAS WHICH ARE OBSTRUCTIONS & LOCAL NAVIGATIONAL REQUIREMENTS**

- 10.1 The entirety of mussel beds bearing 280° at a range of 0.7nm from the outer end of Brixham breakwater and approximately 0.25nm from the shore, including the beds marker buoy and including the entire sea area between the mussel beds and the shore are an obstruction. A diagram of the mussel beds will be displayed on the ONB.
- 10.2 All competitors should be aware that Brixham is a commercial working port and regard should be given to commercial craft including ferries and fishing vessels. It is strongly advised to avoid the main channel in the harbour and the port and starboard navigational marks near the outer end of Brixham Breakwater.

## **11 THE START**

- 11.1 Races will be started by using rule 26 with a line start.
- 11.2 The starting line will be between the start marks as defined in SI 9.2.
- 11.3 A boat starting later than 5 minutes after her starting signal will be scored Did Not Start without a hearing. This changes rules 63.1, A4 and A5

## **12. STARTING PENALTIES**

- 12.1 In the event of a General recall, for a race started under a Black preparatory flag, the identified BFD numbers will be displayed on the back on the CB and pin end starting boat for a minimum of 3 minutes after a long sound signal.

## **13. CHANGE OF THE NEXT LEG OF THE COURSE**

- 13.1 To change the next leg of the course, the Race Committee (RC) will lay a new mark or move the finishing line and remove the original mark as soon as practicable. When in a subsequent change a new mark is replaced, it will be replaced by an original mark. This adds to rule 33.

## **14 THE FINISH**

- 14.1 The Finishing Line will be between the finish marks defined in SI 9.3.
- 14.2 The course may be shortened by the CB at the Finishing Line. In this event the CB shall display flag S with two sound signals prior to the lead boat approaching mark 3; in addition a RC boat may be positioned adjacent to mark 3 displaying S flag. All boats shall then complete the lap they are sailing and after passing mark 3 left to port proceed to the Finishing Line where they will be deemed to have finished. This applies to ALL boats regardless of whether they are on the same lap as the leading boat. This changes and is additional to rule 32.2. Boats not on the same lap as the leading boat will be scored in the order they cross the finish line behind all boats on the same lap as the first boat to finish. This changes rules 28, 32.2, 35 and Appendix A.
- 14.3 After some boats have finished, the RC may record other boats as deemed to have finished before they cross the finish line to save time whether or not they were expected to complete the course within the time limit or time limit extensions. A RC boat displaying flag W will proceed from the finish line towards the previous mark, make a sound signal and verbally hail the boat that they have been recorded as deemed to have finished. The RC may record boats as deemed as finishing as per this instruction at more than one leg of the course and will if necessary continue the back sweep around the course until all boats are recorded. When a boat finishes in accordance with this instruction she shall be given a finishing place after all boats which had previously finished and in the sequential order in the direction from the finish line. If another race is scheduled boats that have been hailed as per this instruction are required to proceed immediately to the starting area. This changes rules 28, 32.1, 32.2, 35 and Appendix

A. This action will be at the absolute discretion of the Race Officer (RO) and this decision shall be final and shall not be grounds for redress under rule 62.1a.

## **15. RETIREMENT**

- 15.1 A retiring helm shall sign the Retirement Declaration Sheet, one for each race retired, before the expiry of the protest time. The declaration sheets will be at the Race Office
- 15.2 A boat that retires from a race shall notify a RC boat as soon as possible.

## **16. TARGET TIMES AND TIME LIMITS**

- 16.1 The target time for the finish of the lead boat is 60 minutes. Failure to meet this target time is not grounds for redress. This changes rule 62.1a.
- 16.2 The Time Limit for each race will be 90 minutes.
- 16.3 Unless SI 14.2 or 14.3 are applied after the first boat has finished, the RO shall keep the finish line open for 30 minutes or until the 90 minute time limit has expired whichever is the later. All boats finishing after the expiry of the time limit shall be scored DNF. This adds to rule 35 and changes rules 63.1, A4 & A5
- 16.4 If no boat has rounded Mark 1 within 30 minutes the race will be abandoned.

## **17 PROTESTS AND REQUESTS FOR REDRESS**

- 17.1 Protest forms are available at the regatta office.
- 17.2 Protests and requests for redress or reopening shall be delivered there within the appropriate time limit.
- 17.3 The protest time limit is 90 minutes after the last boat has finished the last race of the day
- 17.4 Notices will be posted no later than 30 minutes after the protest time limit to inform competitors of hearings in which they are parties or named as witnesses. Hearings will be held in the Holman Room beginning at the time posted.
- 17.5 Notices of protests by the RC or protest committee (PC) will be posted to inform boats under rule 61.1(b).
- 17.6 Breaches of instructions 1.2, 4.3, 15, 20, 23 and 26 will not be grounds for a protest by a boat. This changes rule 60.1(a). Penalties for these breaches may be less than disqualification if the PC so decides. The scoring abbreviation of a discretionary penalty will be DPI, this changes rule 64.1.
- 17.7 On the last scheduled day of racing a request for reopening a hearing shall be delivered either
  - (a) within the protest time limit if the requesting party was informed of the decision on the previous day;
  - (b) no later than 30 minutes after the requesting party was informed of the decision on that day.This changes rule 66.
- 17.8 On the last scheduled day of racing a request for redress based on a PC decision shall be delivered no later than 30 minutes after the decision was posted. This changes rule 62.2.
- 17.9 Notices of Protests and redress hearings posted on the ONB shall be considered sufficient notice to all parties and witnesses. It is the responsibility of Parties to consult the ONB at or before notice expiry time before leaving the venue for the day. This changes rule 63.2.
- 17.10 The Advisory, Arbitration and Exoneration Penalty system of the RYA will be available, the penalty under this system shall be 10% with a minimum of 2 places but not greater than DNF and will be scored DPI. This procedure can be obtained on the RYA website ([www.rya.org.uk/general/rulesdisputes](http://www.rya.org.uk/general/rulesdisputes)) and will be posted on the ONB.

## **18 SCORING**

- 18.1 One Points Race is required to constitute a valid Championship.

## **19 SAFETY REGULATIONS AND GUIDLINES**

- 19.1 Adequate personal flotation shall be worn at all times when afloat except briefly while changing or adjusting clothing or personal equipment by all competitors. Neither a wetsuit nor dry-suit constitutes adequate personal flotation. It is recommended that the 'Personal Flotation Device' (PFD) is worn outside all other clothing as this can assist rescue crews in the event of a competitor requiring assistance to be retrieved from the water. This amends and adds to the preamble to Part 4 of the RRS, rules 27.1 and 40.
- 19.2 It is strongly advised that Long hair on all crew shall be tied up or restrained to eliminate the risk of entanglement.
- 19.3 On arrival in the racing area each day, each boat shall sail past the stern of the CB on starboard.

## **20 REPLACEMENT OF HELM**

- 20.1 Substitution of helmsmen will not be allowed. Substitution of the crew will require the prior agreement of the YWDB race committee

## **21. EQUIPMENT AND MEASUREMENT CHECKS**

- 21.1 A boat or equipment may be inspected at any time for compliance with the Class rules and SIs.
- 21.2 On the water, a boat can be instructed by a RC equipment inspector or measurer to proceed immediately to a designated area for inspection.

## **22. OUTSIDE HELP**

- 22.1 Any boat that receives outside help, whether permitted by rule 41 or not, shall report the facts to the RC within the time period for protests.

## **23 OFFICIAL BOATS**

- 23.1 Official boats will be described at the briefing and a written description placed on the ONB by 09.30 Sunday 7<sup>th</sup> August.
- 23.2 All official boats shall display a numbered flag for identification.

## **24 SUPPORT BOATS**

- 24.1 Support and coach boats are not permitted.

## **25 TRASH DISPOSAL**

- 25.1 Trash may be placed aboard support or official boats. Breaches of RRS 55 may incur a penalty less than disqualification at the discretion of the PC.

## **26 RADIO COMMUNICATIONS**

- 26.1 Except in an emergency, a boat that is racing shall not make voice or data transmissions and shall not receive voice or data communication that is not available to all boats.

## **27 PRIZES AND PRIZE GIVING**

- 27.1 Prizes will be awarded to the winning boat in the Championship. Additional prizes may be awarded at the discretion of the organisers.
- 27.2 Prize givings will be held on Tuesday 9<sup>th</sup> and Thursday 11<sup>th</sup> August.

## **28 RISK STATEMENT**

- 28.1 Rule 4 of the Racing Rules of Sailing states: "The responsibility for a boat's decision to participate in a race or to continue racing is hers alone."
- 28.2 Sailing is by its nature an unpredictable sport and therefore inherently involves an element of risk. By taking part in the event, each competitor agrees and acknowledges that:
  - (a) They are aware of the inherent element of risk involved in the sport and accept responsibility for the exposure of themselves, their crew and their boat to such inherent risk whilst taking part in the event;

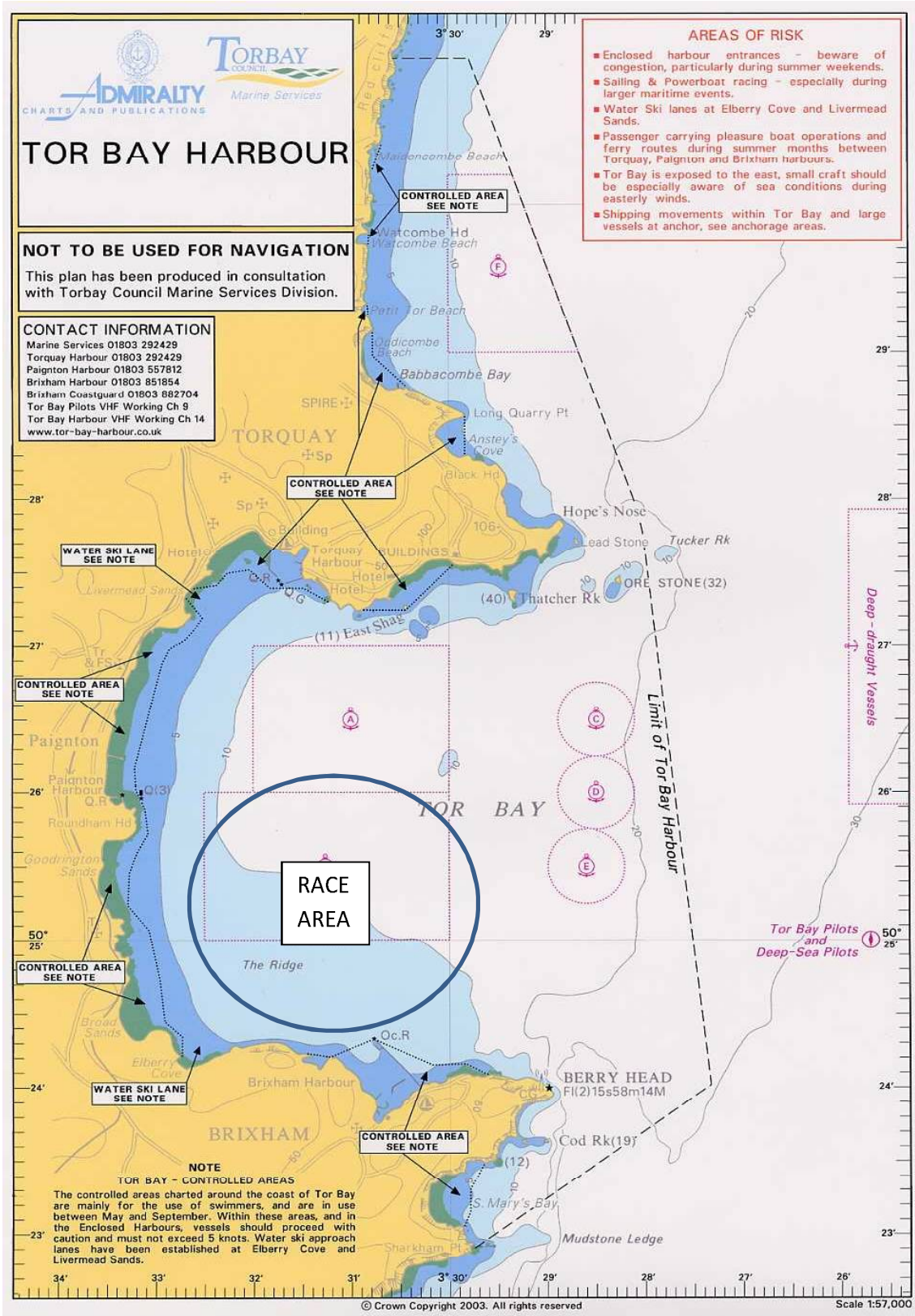
- (b) They are responsible for the safety of themselves, their crew, their boat and their other property whether afloat or ashore;
- (c) They accept responsibility for any injury, damage or loss to the extent caused by their own actions or omissions;
- (d) Their boat is in good order, equipped to sail in the event and they are fit to participate;
- (e) The provision of a race management team, patrol boats and other officials and volunteers by the event organiser does not relieve them of their own responsibilities;
- (f) The provision of patrol boat cover is limited to such assistance, particularly in extreme weather conditions, as can be practically provided in the circumstances.
- (g) They are responsible for ensuring that their boat is equipped and seaworthy so as to be able to face conditions that they may incur, that their crew is sufficient in experience and fitness to withstand such weather.
- (h) Their boat is adequately insured, with cover of at least £2,000,000 against 3<sup>rd</sup> party claims.

### 28.3 INSPECTIONS

The fact the race committee conducts inspections of a boat does not reduce the responsibilities of each competitor in this Notice of Race

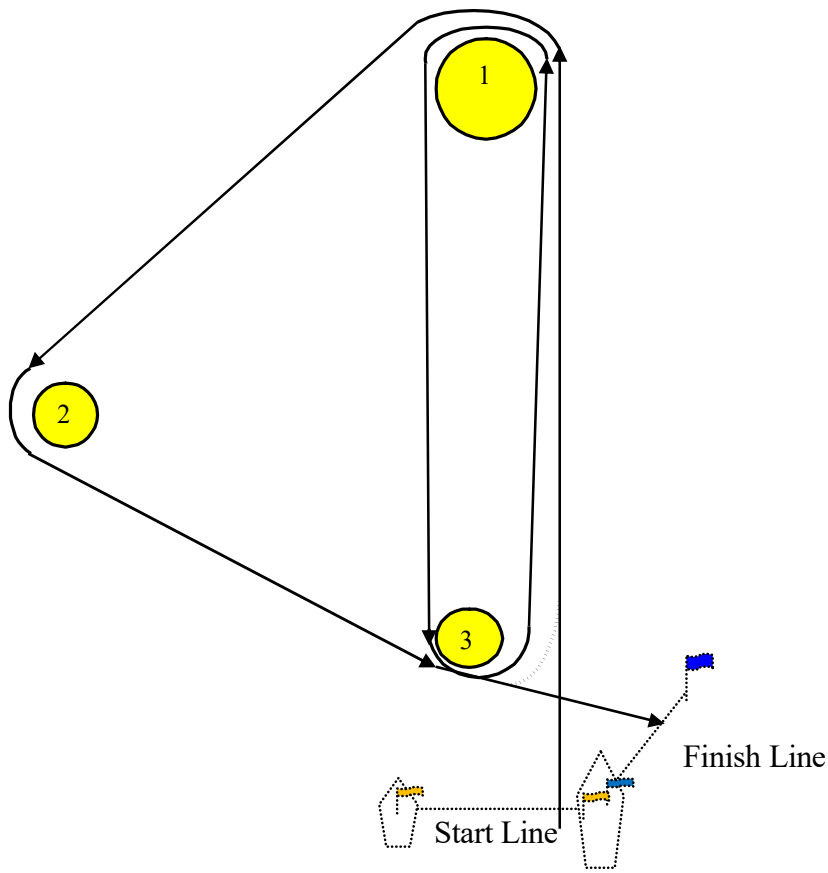
## 29 RIGHTS TO USE NAME AND LIKENESS

29.1 By participating in the event, competitors automatically grant to the OA, the UK Contender Class Association and event sponsors the right, in perpetuity, to make and show, at their discretion, any photography, audio and video recordings, and any other reproductions of them made at the venue or on the water from the arrival at the venue, until their final departure, without compensation.



Appendix 2

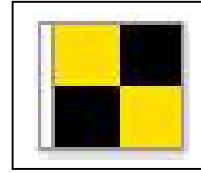
Course Triangle / Sausage (windward/leeward) / Triangle



Course Triangle / Windward - leeward	2 Laps (includes 2 Beats)	3 Laps (includes 3 Beats)
	From the Start Line Marks to be passed as follows 1,2,3,1,3,finish	From the Start Line Marks to be passed as follows 1,2,3,1,3,1,2,3,finish
All course marks are to be left to port.		
(Note Mark 3 is not a mark of the course on the first leg and may not be laid at the start)		
On the final lap <b>or</b> if 'Shortened Course' is signaled on the 'Committee Boat' or at Mark 3 upon passing Mark 3 to port, then proceed to finish line.		



**YACHTING WORLD DAYBOAT CHAMPIONSHIP 2016  
BRIXHAM YACHT CLUB**



**AMENDMENT TO  
NOTICE OF RACE &  
SAILING INSTRUCTIONS**

**No 1**

**NOR Provisional Sailing/Social Programme  
&  
SI 5.3**

**The Competitors Briefing is changed to 0900 Sunday 7<sup>th</sup> August in the BYC Clubhouse**

**Race Committee  
27 July 2016**